

Fitting of the Static System:



Place the wheel rim on the centre plate of the press (Fig. 01) and drop it down with the hydraulic piston using the foot pedal (Fig. 02, Fig 03)). Place the tyre on the press and lift the upper bead with the 3 metal lifting arms of the press (Fig. 04).

Grease the inside tread of the tyre as uniformly as possible (approximately 1.5kg for a 20" or 22.5" system) (Fig. 05).



Fig. 01



Fig. 02



Fig.03



Fig. 04



Fig. 05

Insert the 3 segments inside the tyre (Fig. 06) and apply the supplied thread adhesive to wedge bolt making sure double locking washers are fitted under the head of each bolt (Fig.07), put the wedge bolts in place to connect the 3 segments (4 to 5 threads) (Fig. 08).



Fig. 06



Fig. 07



Fig. 08

Lift up the wheel rim with the hydraulic piston using the foot pedal so that the bottom of the wheel rim is level with the bottom tyre bead. Tighten down each wedge bolt in turn so that each wedge is level or just below the top of the wedge slot. Use torque limiting tool to tighten each wedge bolt to 60Nm (16"-16.5" wheels) or 80Nm (20"-22.5" wheels) (Fig. 09). Apply the supplied thread adhesive to clamping plate bolts making sure double locking washers are under the head of each bolt (Fig. 10) Fit clamping plate bolts at each joint position and tighten up the clamping bolts (Fig. 11).



Fig.09



Fig.10



Fig. 11

Release the 3 metal lifting arms of the press to release the upper tyre bead. Place the seal in position on the edge of tyre bead (Fig. 12).

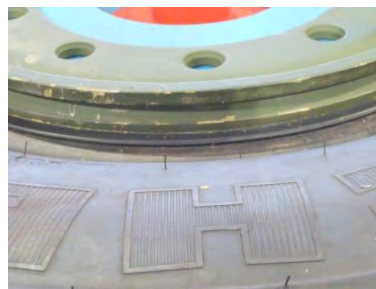


Fig. 12

Place the de-mountable flange and locking ring on the rim, screw in the compression bar and place the compression bracket on the de-mountable flange. Screw locking nut onto compression the bar (Fig. 13). Place the two 40mm square tube section under the wheel rim. (Fig. 14)

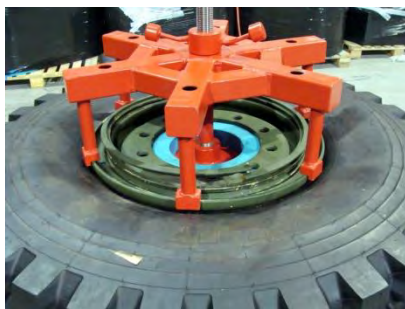


Fig. 13



Fig. 14

Using the foot pedal of the hydraulic cylinder, compress the de-mountable flange down so that you can now fit the locking ring (Fig. 15).



Fig. 15

Remove the locking nut, the compression bracket and the compression bar and fit the safety locking clip to the locking ring (Fig. 16, Fig. 17)



Fig. 16

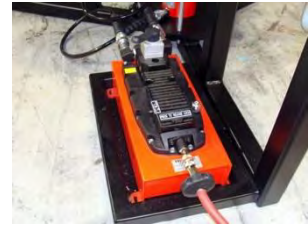


Fig. 17

Inflate the tyre.

Runflat Fitting Machine Parts List

Air Operated foot pedal for hydraulic cylinder



Metal lifting arm



Compression bar and Locking nut



Compression Bracket



Runflat Static parts list

<u>Part no.</u>	<u>Description</u>	<u>Qty</u>	
RFI ---	Runflat Static	3	
RFI 003/b	D type Wedge	3	
RFI 002/b	D type Clamping plate	3	
RFI 007/c	M16 x 130mm Hex head bolts	6	
RFI 019/a	NL 16 Nord-loc washer	6	
RFI 001/b	M16 Fixing block	3	

RFI 035 M8 x 35mm CSK socket cap screw 3



RFI 054 Static high temperature grease 1.5kg



Wheel Parts List

Wheel Rim



De-mountable flange



Locking ring



Seal



Safety locking clip

